



Dialogue on Marine Solutions in Pacific





VITAL SITES

THE JOURNEY TO MARSEILLE

presented by



The Journey to Marseille", a 6-month series of online events and multimedia content to run between June 2020 and the rescheduled World Conservation Congress in January 2021.

The journey will **highlight activities, stories, expert opinions, and case studies** on the **importance of protected and conserved areas from around the world**, with a series of multimedia events and activities on our new digital platform.

1rst event: Dialogue on Marine Solutions in Pacific



Agenda

- ❑ Introduction (5')
- ❑ Session 1(15'): Presentation of Educational Managed Marine Areas (EMMA) in French Polynesia by FAPE and the Ministry of Education, Youth and Sports
Q&A (5')
- ❑ Session 2 (15'): Presentation of Locally Managed Marine Areas (LMMA) in the Pacific by the LMMA network
Q&A (5')
- ❑ Session 3 (15'): Insights and examples from the Global Island Partnership (GLISPA)
Q&A (5')

Conviviality Principles



Speakers

Laëtitia Bisarah

Te ora naho/FAPE
Project Manager



Roland Sanquer

Project Manager - Ministry of
Education, Youth and Sports
of French Polynesia



Caroline Vieux

Pacific LMMA
Network Coordinator



Kate Brown

GLISPA Executive Director



Cécile Fattebert

IUCN PANORAMA
Programme Officer



Carole Martinez

IUCN Senior Grant
Manager and BEST
Coordinator





PANORAMA

SOLUTIONS FOR A HEALTHY PLANET

www.panorama.solutions



The PANORAMA partnership

A joint initiative...

PANORAMA

SOLUTIONS FOR A HEALTHY PLANET

Secretariat



Development Partners:



...with thematic communities

Protected areas

Marine and coastal

Ecosystem-based Adaptation

Agriculture and Biodiversity

Business engagement

Nature-Culture (upcoming)

Sustainable urban development (upcoming)



Integrated Learning and Knowledge Sharing

Communications

- Publications
- Newsletters
- Webinars
- Social Media
- Videos



MAR
09

PANORAMA webinar: Gender mainstreaming solutions for protected areas

by IUCN

Contests

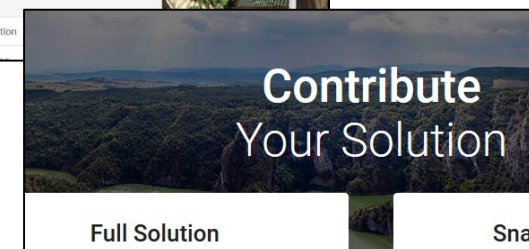
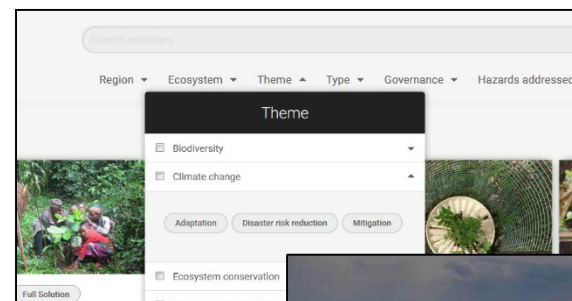


Face-to-face meetings

- Workshops
- Trainings
- Side Events at Conferences



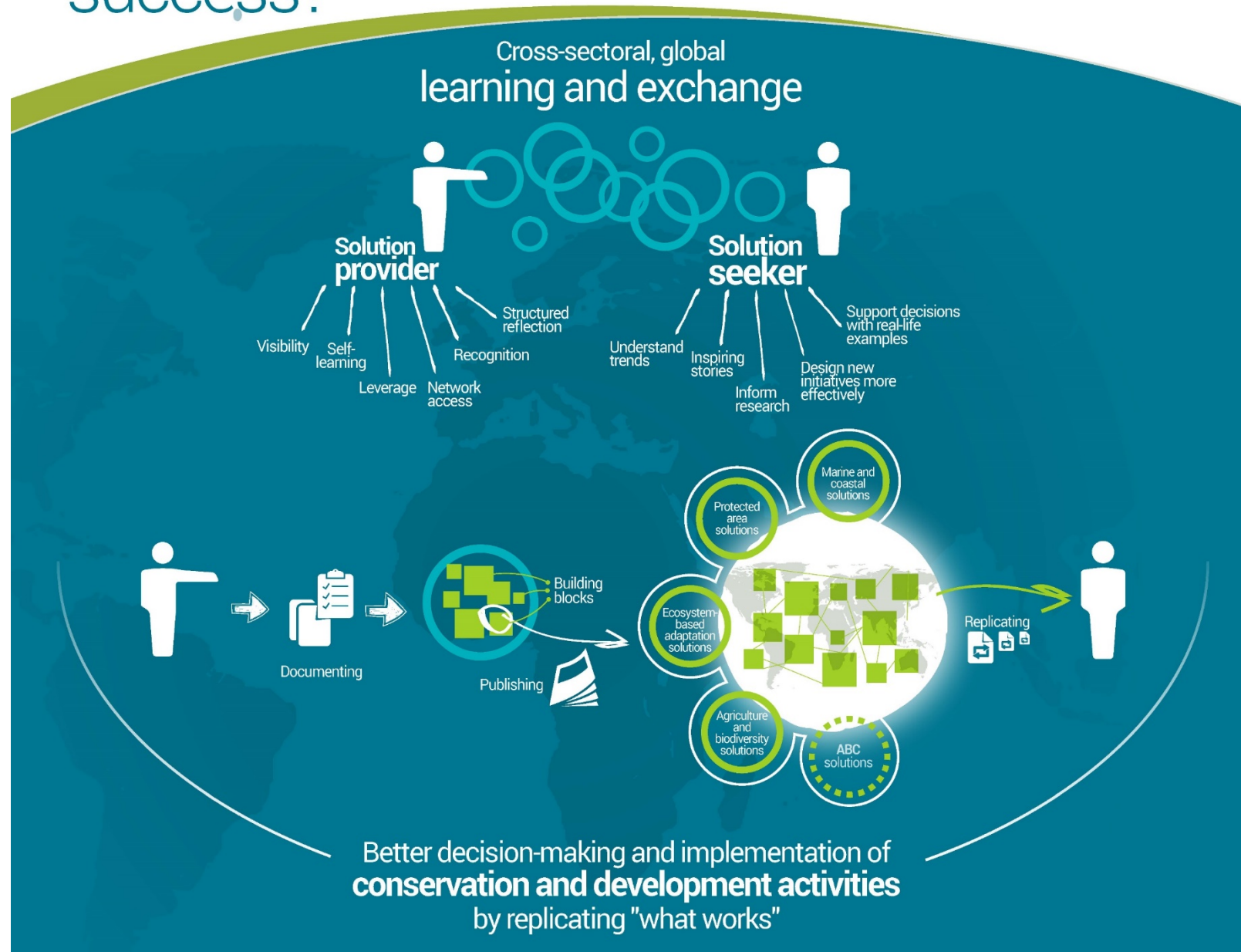
Sophisticated online platform
www.panorama.solutions





What if
we could learn
from each other's
success?

PANORAMA
SOLUTIONS FOR A HEALTHY PLANET



About PANORAMA - Solutions for a Healthy Planet

Global multi-actor partnership
Support learning from “what works”



~ 600 solution
case studies

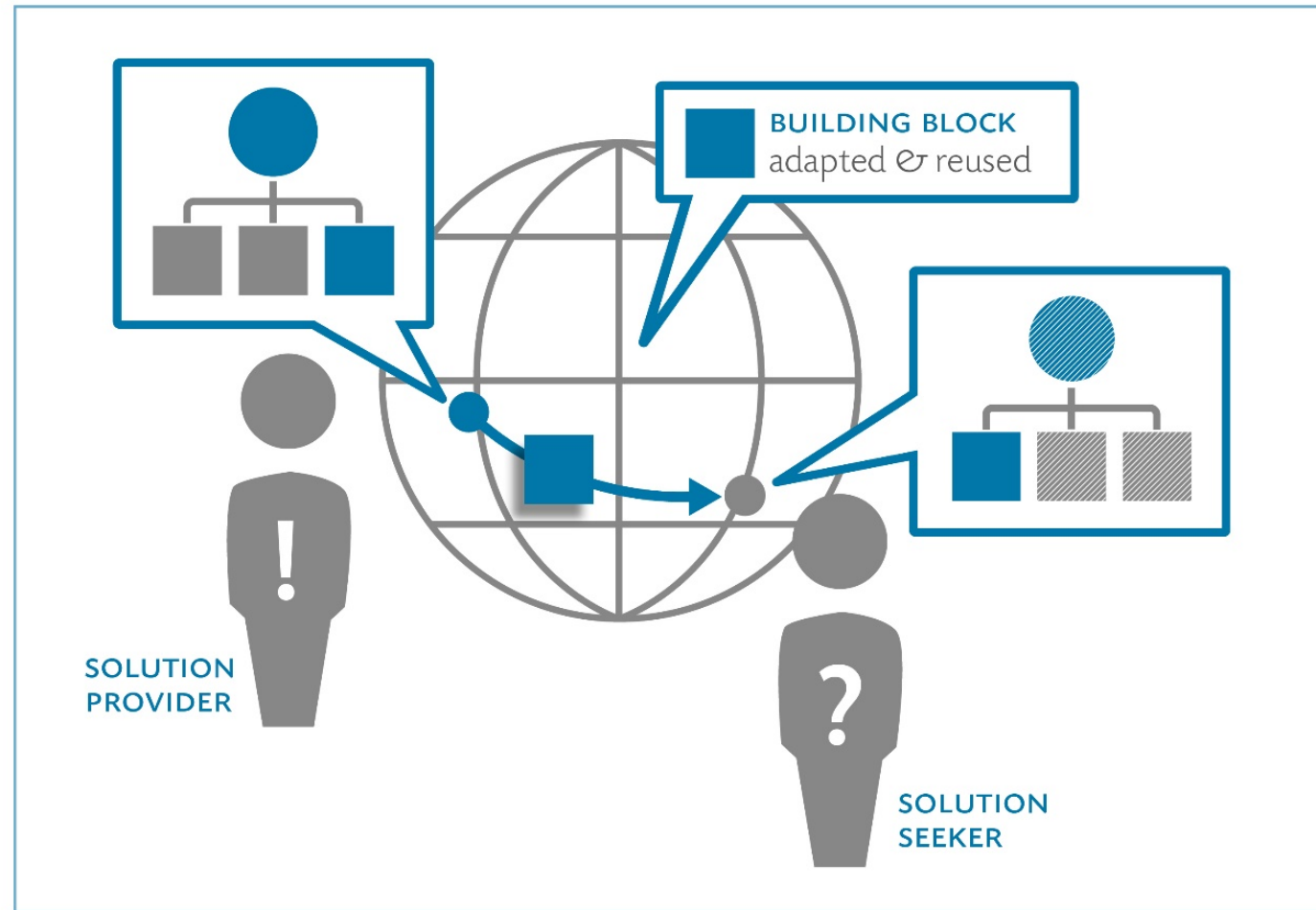
1500+ replicable
success factors

480+ Solution
Providers

PANORAMA Solutions ...

are tools, methods, processes and approaches that **work and inspire action**, and

- have an impact
- are scalable
- address conservation and development challenges in an integrated manner





Cécile Fattebert

Programme Officer, Solutions
Global Programme on Protected Areas (GPAP)
IUCN (International Union for Conservation of Nature)
cecile.fattebert@iucn.org



A European initiative to foster action in 7 regions of global importance

BEST

VOLUNTARY SCHEME FOR BIODIVERSITY AND ECOSYSTEM SERVICES IN TERRITORIES OF EUROPEAN OVERSEAS



BEST (Biodiversity and Ecosystem Services in Territories of European Overseas) aims to strengthen biodiversity and ecosystem conservation, sustainable development and management of ecosystems and ecosystem services, as well as climate change adaptation and mitigation in the 7 European Overseas regions by:

1. Profiling key biodiversity areas (KBAs) & priority areas for action
2. Defining investment niches & supporting actions on the ground through project funding
3. Raising awareness & building capacity

Regional profiling - a scientific & participatory process

- Proven assessment tool to efficiently guide conservation efforts and investments
- A division of work smartly combining central coordination and regional teams
- A participatory process through consultations and workshops with regional and local stakeholders and experts
- Regional assessments based on most recent scientific data, experts and stakeholders' inputs & observations
- A tailored approach to define investment niches & priorities matching EU Overseas stakeholders' needs for future project funding

Caribbean region

- Coral reef restoration
- Marine protected area
- Sea turtle conservation
- Coastal wetlands preservation
- Agroecosystems - ecosystem service quantification
- Invasive alien species control
- Payment for ecosystem services

Polar/Sub-Polar

- Seabird conservation
- Community biodiversity monitoring

Global

- Global partnerships
- Multilateral agreements

Indian Ocean

- Island dynamics and conservation
- Terrestrial reptile conservation
- Environmental education
- Whale conservation
- Forest protection
- Loggerhead turtle conservation & Fisheries by-catch mitigation

Pacific

- Regional marine conservation
- Dry forest restoration
- MPA management capacity building
- Endangered species conservation (2 projects)
- Environmental management strategies
- Coral reef ecosystem services
- Spatial planning

South Atlantic

- Forest restoration & biosecurity
- Educational nature trails
- Gumwood restoration
- Marine spatial planning
- Climate change risk assessment

Polar/Sub-Polar

- Marine conservation
- Participative climate change impact monitoring



Legend

- EU Overseas Countries and Territories (OCTs)
- EU Outermost Regions (ORs)
- African, Caribbean and Pacific (ACP) group of states and island states of the same regions
- Exclusive Economic Zone (EEZ) of the EU
- BEST projects funded in 7 EU Overseas regions & project focus

For more information
<http://ec.europa.eu/best/>
<https://portals.iucn.org/best/>

Adélie Land



A European Initiative of international importance

Dedicated to 34 Territories that are part of Global Hotspots of Biodiversity

Decision of the [CBD COP XI/157](#) on the Review of the Programme of Work on Island Biodiversity mentions the BEST initiative among the “*the progress on sustainable financing mechanisms developed in island regions for climate change and Biodiversity*”.

BEST Acknowledged as a GLISPA Bright spot



BEST

VOLUNTARY SCHEME
FOR BIODIVERSITY AND
ECOSYSTEM SERVICES
IN TERRITORIES OF
EUROPEAN OVERSEAS



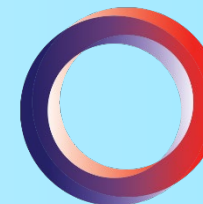
A Partnership

European Parliament Preparatory Action

An initiative/several programmes funded by:



OFB
OFFICE FRANÇAIS
DE LA BIODIVERSITÉ



AFD
AGENCE FRANÇAISE
DE DÉVELOPPEMENT



BEST

VOLUNTARY SCHEME
FOR BIODIVERSITY AND
ECOSYSTEM SERVICES
IN TERRITORIES OF
EUROPEAN OVERSEAS

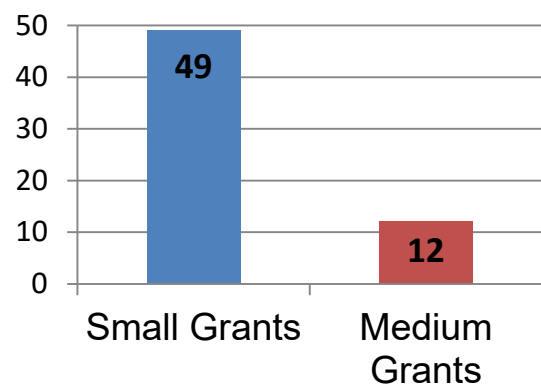


A pilot initiative with a wide scope

“Promoting conservation and sustainable use of biodiversity and ecosystem services in European Outermost Regions and European Overseas Countries and Territories”

Supporting Important Actions on the Ground in the OCTs

61 projects

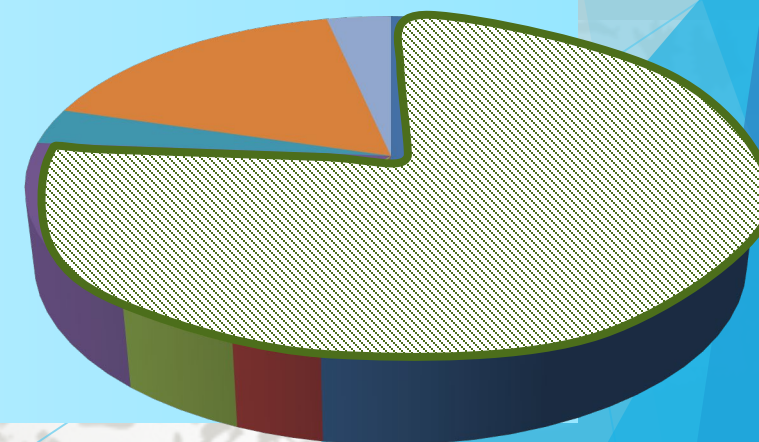


Nearly **€ 8 million** invested

72 organisations funded

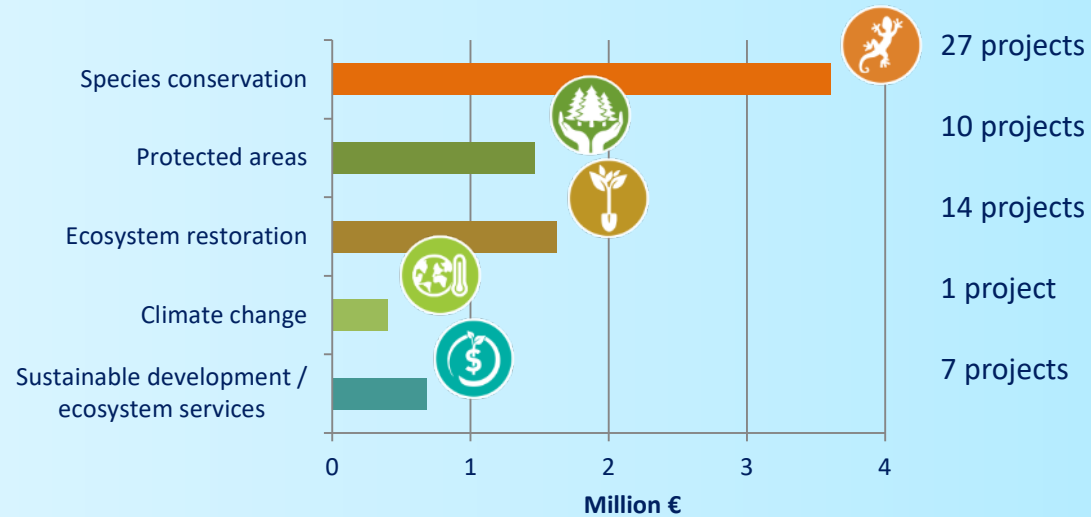
76% of the projects funded
are led by local organisations

- Local NGO/CSO
- Local SME/socio-professional organisation
- Municipality/Local governmental body
- Territorial Government
- Organisation based in the region (uninhabited territories)
- EU MS Organisation
- Regional Organisation

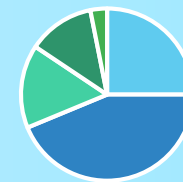


Supporting Important Actions on the Ground in the OCTs

Diverse Projects from the Poles to the Tropics



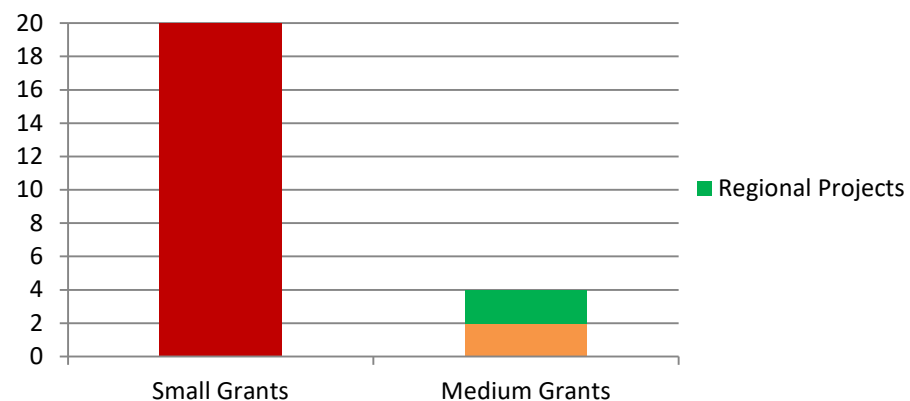
32 Marine projects



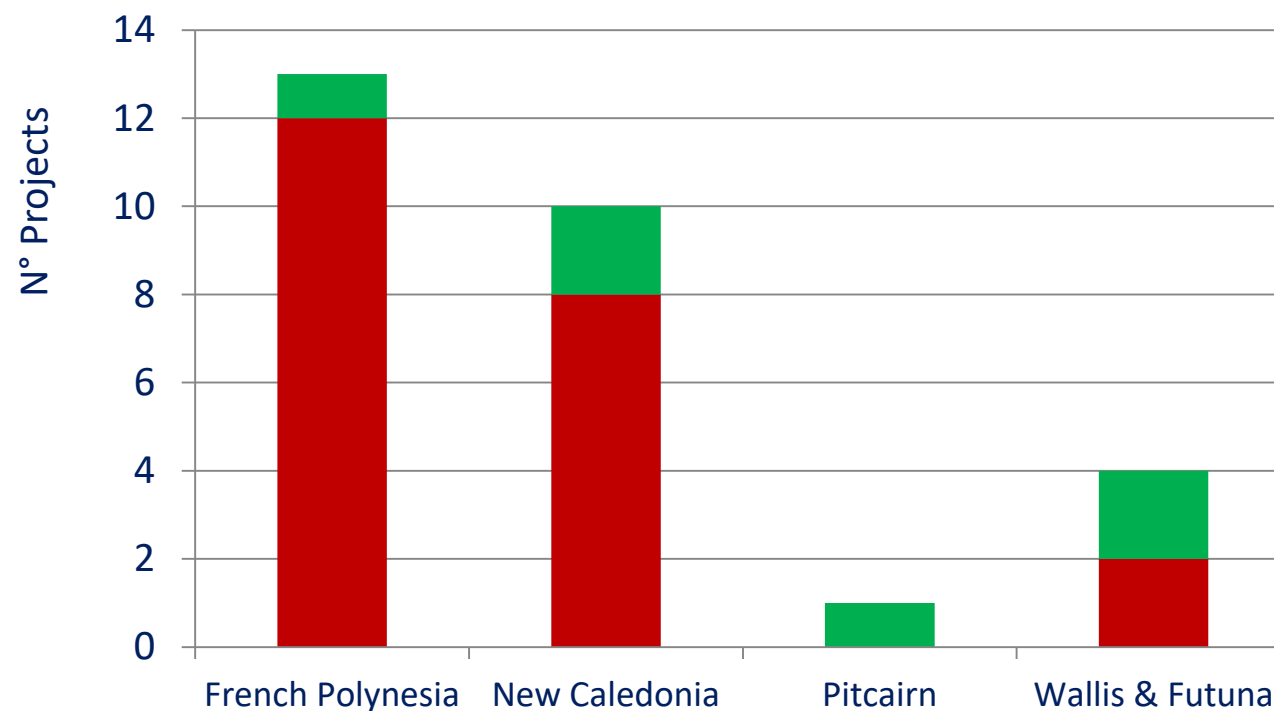
- Protected areas
- Species conservation
- Ecosystem restoration
- Sustainable development / ecosystem services
- Climate change

Supporting Important Actions in the Pacific OCTs

24 projects funded



100% of Pacific OCTs territories benefited

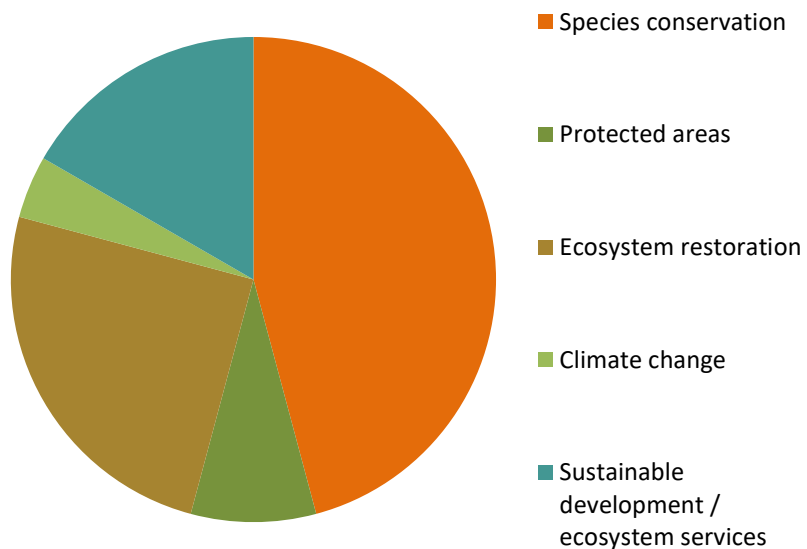


Nearly **€ 2,8 million**
invested

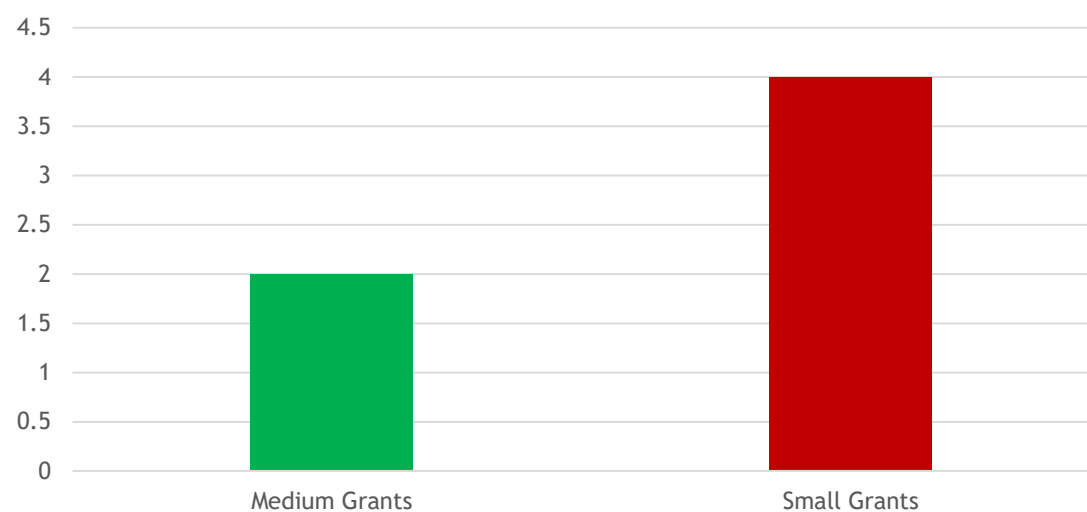
Supporting Important Actions in the Pacific OCTs

24 projects funded

Pacific projects main objectives



6 Pacific marine projects





Awakening vocations



6 local young project coordinators trained

Building capacities



- More than 60 workshops & trainings
- Growing sustainability for 8 small local civil society organizations

Involving & raising awareness



Collaborating with local authorities



More than 20,000 kids and adults involved

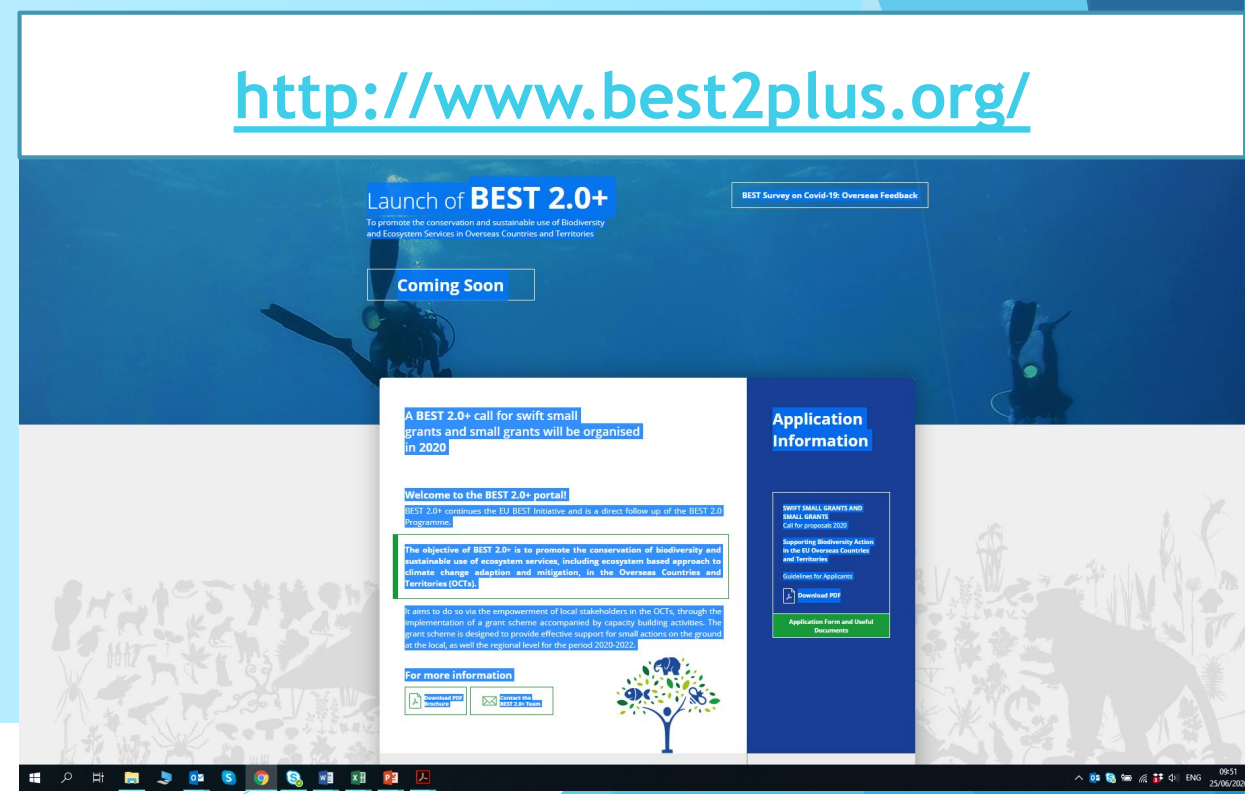
BEST 2.0+ continues the EU BEST Initiative and is a direct follow up of the BEST 2.0 Programme.

The objective of BEST 2.0+ is to promote the **conservation of biodiversity and sustainable use of ecosystem services**, including ecosystem based approach to climate change adaption and mitigation, in the Overseas Countries and Territories (OCTs).

A new call for proposals in 2020.

Total budget of : **€ 1,3 million**

<http://www.best2plus.org/>







VITAL SITES
THE JOURNEY TO MARSEILLE

Laëtitia Bisarah - Roland Sanquer

Laëtitia Bisarah

Ingenior specialised in environnement

Project Officer for FAPE/Te ora naho since 2017

Managing the BEST project on Educational Marine Managed Areas (EMMAs) and supporting schools and teachers for joining the network of labelised MEAs

Coordinating and putting in place the monitoring network of mangroves in French Polynesia

Coordinating training of local environnemental NGOs in close collabortation with local stakeholders and municiplalities on project management and sustainable



Roland Sanquer

In charge of Environmental Education et Sustainable Development for the French Polynesia Ministry of Education, Youth and Sport since 2016.

Advisor on curriculum since 2000.

Certified Trainer since 1997.

Teacher since 1989.



Caroline Vieux

Caroline Vieux is currently coordinating the Locally Managed Marine Area Network better known as the LMMA network. As such, she manages the community-based coastal fisheries management component implemented by the LMMA network as part of the PEUMP program (Pacific European Union Marine Partnership).

She formerly coordinated the INTEGRE project in French Polynesia, in charge of the coral reefs management for SPREP and coordinating the coral reef monitoring network Polynesia mana.

She is also the Pacific focal point of the BEST2.0 + program.



The 100% Solution

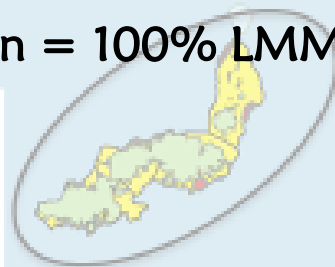




2015

Summary

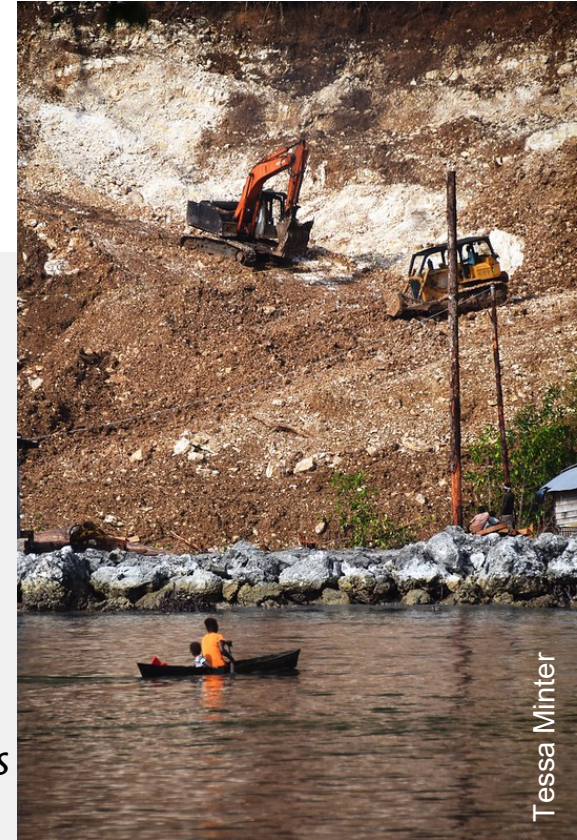
- The 100 per cent solution aims for implementation of community-based fisheries management at large scale, covering most of coastal waters and providing coastal Pacific Island communities with the opportunity to achieve resilient and sustainable development.
- Given that coastal communities depend on land and sea resources and both are intimately linked, broad-scale, far-reaching and highly integrated approaches are required. This is also known as the need for “scaling”.
- Principles of “good governance” need to be followed such as ensuring that communities’ are respected and that their interests are foremost
- 100% solution = 100% LMMAs



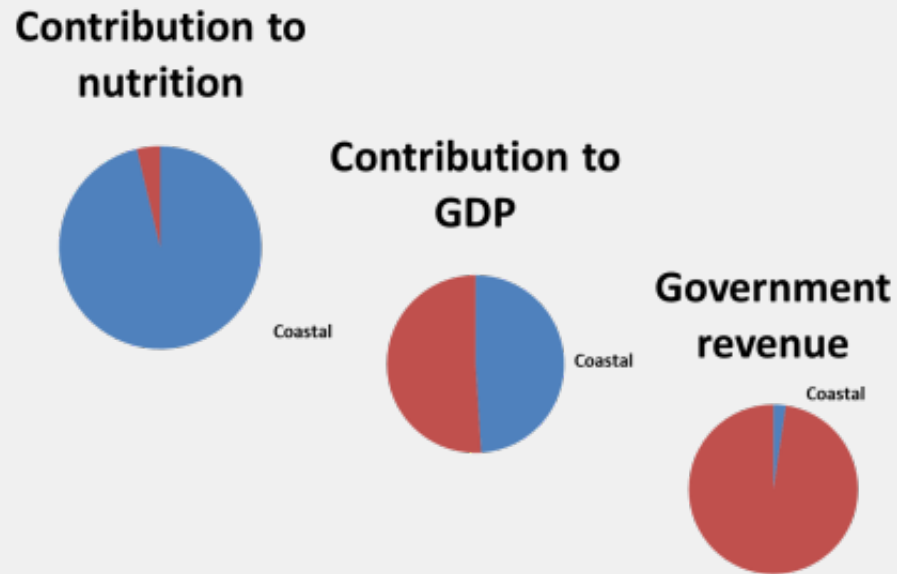
50 0 50 100 km

The Pacific Context

- Coastal areas and inshore fisheries are the **most vulnerable** to development impacts, overfishing, climate change and disasters, further complicating management
- Majority of communities are **heavily depending on coastal resources**. Social impacts on peoples livelihoods and survival is enormous if management systems allowed to collapse.
- Communities have demonstrated that they can drive local management regimes that secure or improve fisheries, ecosystems and associated livelihoods.



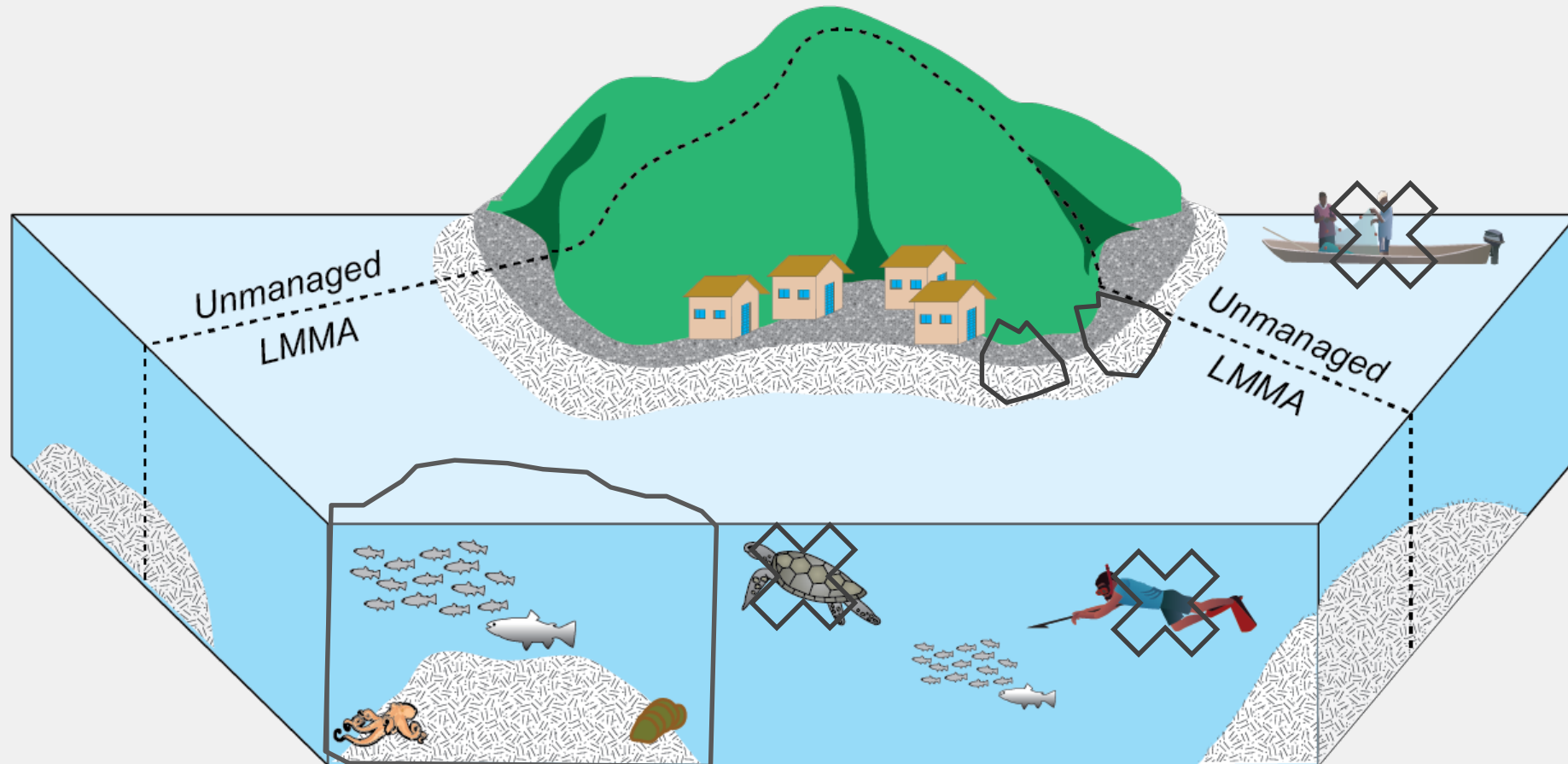
The Pacific Context



- However, the majority of communities in the region (around **90%**) have not received support for community-based management and there is continuing depletion of coastal resources and degradation of coastal ecosystems
- Most support provided by NGO on **short-term projects**
- PSIDS **governments under-invest** in coastal fisheries management

What is an LMMA?

... nearshore marine areas that is under some form of community-based management or co-management with government or NGOs....'



The 100% Solution at work....

1. Strengthening the LMMA tool

- Design **appropriate information** for communities to plan and implement integrated management themselves
- Develop **effective communication channels** between communities and government to improve legislation and support to LMMAs (multi-stakeholder group, fisheries information and trends summaries..)
- Develop **cost-effective approaches** to allow for replication



A new idea for coastal fisheries:

asking the right questions to enhance coastal livelihoods



Identifying the livelihood idea you wish to test

- 1 Brainstorm a list of potential ideas. Remember that these can include new ideas or ideas to improve existing practices. Select one of these to assess.

Please write the selected livelihood that you have chosen to assess:

Sheet 1



Natural resources

On the land natural resources can include plants, fresh-water sources, animals and minerals. In the sea natural resources can include mangroves, seagrass, coral, fish, marine animals, sand and gravel, or clean sea water.



1a

What natural resources does the livelihood idea need or rely on and how much will be available?

Sheet 3



People and skills

This refers to the availability of individual people, groups, families, tribes or the whole community, and if the required skills and knowledge can be found within or outside the community. This also includes ensuring activities are culturally appropriate.

3a

What people and skills are required for this livelihood, and how much time would each person need to work?

Sheet 4



Markets

This includes where things are bought and sold (such as market places, shops, passing ships, visitors, internet) but also how things are traded (transport, rules and laws, taxes) and information (on prices or competition) or credit and loans.

4a

What is the market for your livelihood product?

The 100% Solution at work....

2. Spreading the LMMAs to achieve 100% management of coastal waters and adjacent lands

- Disseminate management information and incentive through:
 - Social media, national campaigns
 - Art
 - Community networks



The 100% Solution at work....

2. Spreading the LMMAs to achieve 100% management of coastal waters and adjacent lands

- Develop **effective support from governments** to communities at large scales
 - Develop and implement provincial/national **scaling-up strategies**, including information strategies
 - Train **community champions**
 - **Increase capacity** of fisheries department
 - Develop cross-sectoral collaboration



Island management based on LMMAs



The 100% Solution at work....

Impact

- Sustaining territories of life
- Achieving global targets



Jan Van der Ploeg

The 100% Solution at work....

Reflections

- LMMA is currently implementing the solution in Fiji, Solomons, Vanuatu and Papua New Guinea*
- Learning strategy developed
- First sharing at the LMMA conference in late 2021

* Under the Pacific EU Marine Partnership (PEUMP) Programme funded by the European Union and the Government of Sweden until end of 2022.

Thank you

Caroline Vieux

LMMA Network International Coordinator

caroline@lmmnetwork.org





VITAL SITES
THE JOURNEY TO MARSEILLE

Kate Brown



Kate Brown is the Executive Director of the Global Island Partnership, a platform that enables island leaders and their supporters to take action to build resilient and sustainable island communities. Kate is a passionate advocate for islands. She is originally from New Zealand and lived for eight years in Apia, Samoa.

Contact Kate at: kate.brown@glispa.org

Pacific Marine Bright Spots



 facebook.com/glispa

 linkedin.com/company/glispa

 twitter.com/GLISPA_discuss

 glispa.org

 instagram.com/glispa_

MICRONESIA CHALLENGE

Launched in 2006 to effectively conserve 30% of near-shore marine and 20% of the terrestrial resources across Micronesia by 2020

Endowment of over 18M USD of a 55M USD target to support sustained implementation

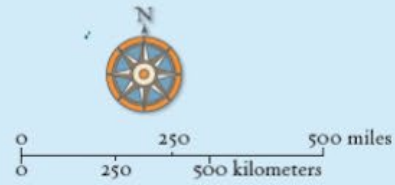
Over 150 protected areas across 3 countries (Palau, Federated States of Micronesia and Marshall Islands) and 2 US territories (Guam and Commonwealth of Northern Marianas)

www.micronesiachallenge.org

www.ourmicronesia.org



THE MICRONESIA CHALLENGE



The Nature Conservancy
Protecting nature. Preserving life.



- Micronesia Challenge Boundary
- Partner/Project Site



PALAU NATIONAL MARINE SANCTUARY

Launched in 2015, the Sanctuary will encompass 80% of Palau's EEZ with 20% reserved for traditional fishing & reformed domestic fishing fleet to serve Palau's domestic and tourism needs to be established by 2020.

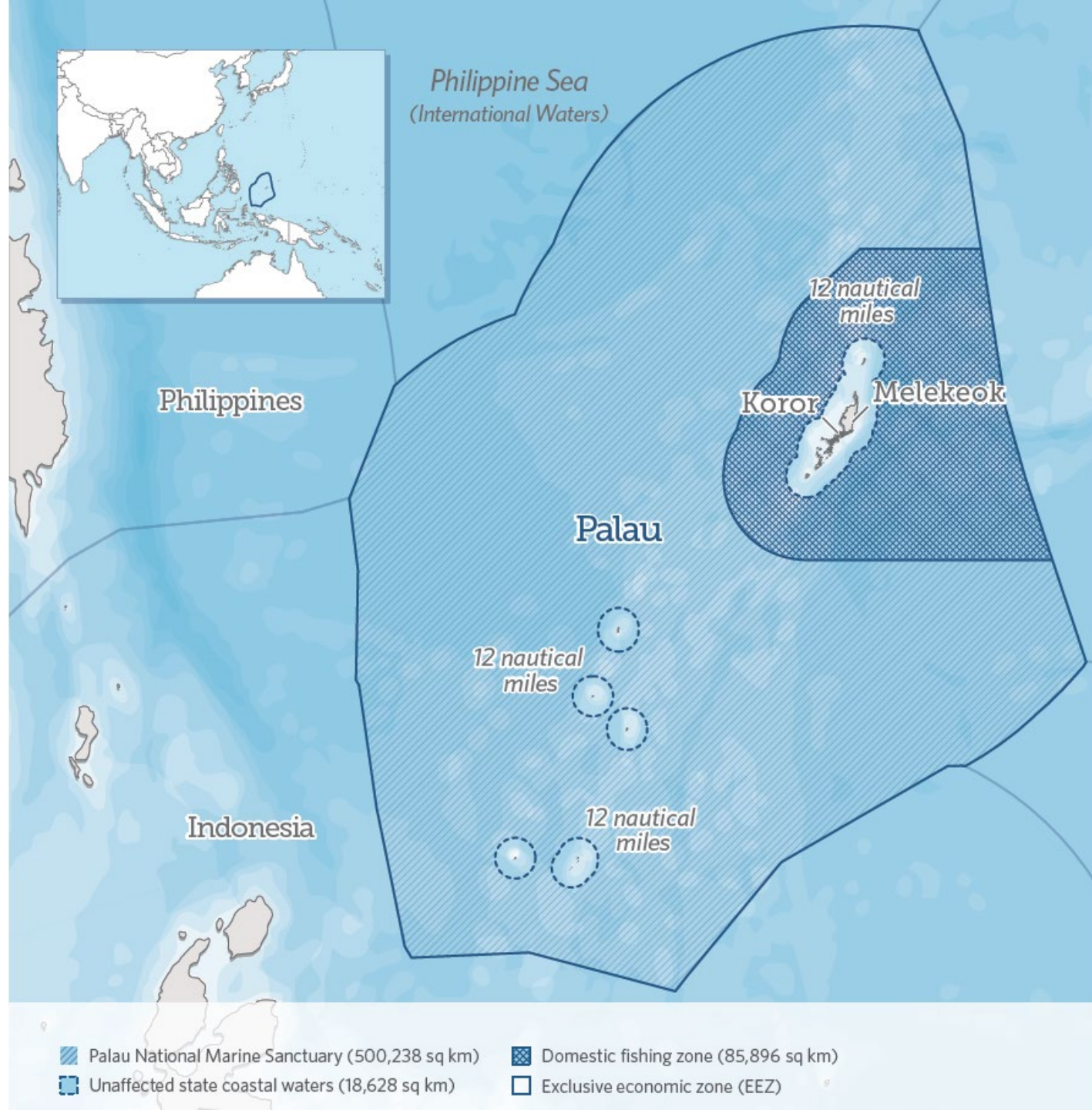
Signed into law the protect of approximately 500,000km² to protect Palau's marine resources and global tuna stocks

Developed critical partnerships to support implementation in the 5 year transition period

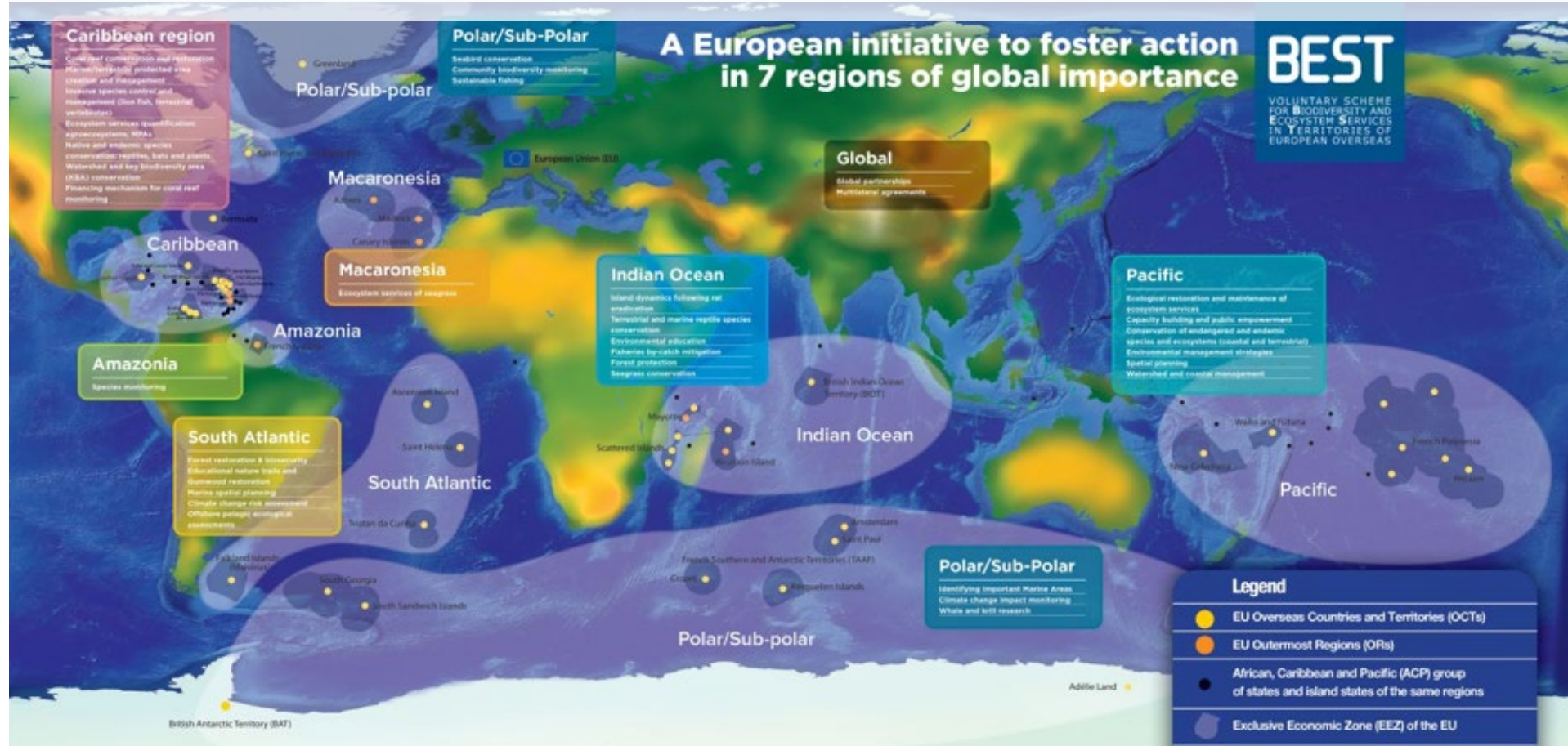
Launched the Palau Pledge tourists sign an eco-pledge on arrival to act in an ecologically responsible way on the island

www.palaumarine.org





BEST CHALLENGE



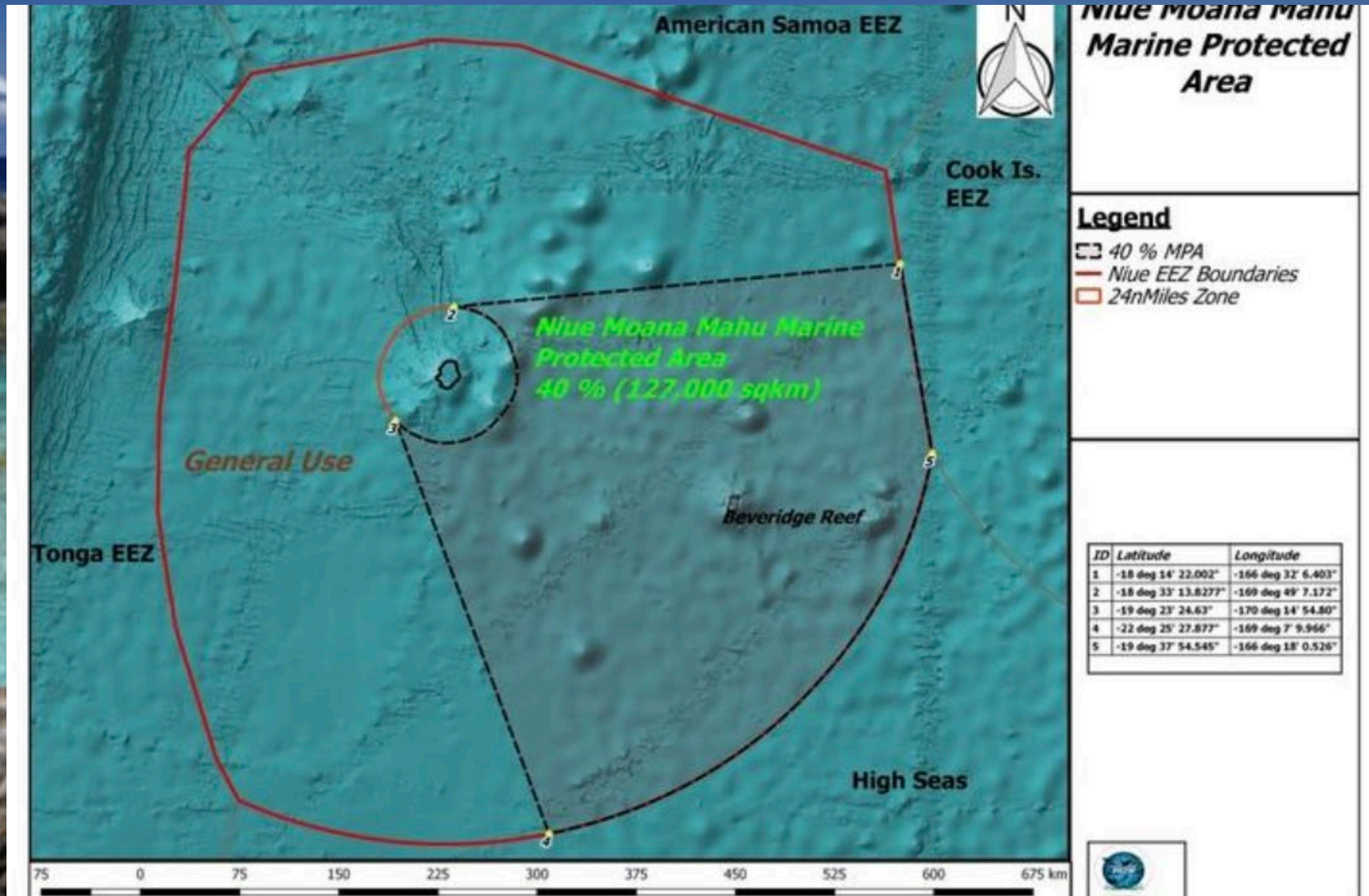
Niue Moana Mahu Marine Protected Area



Photo: Niue Ocean Wide Project

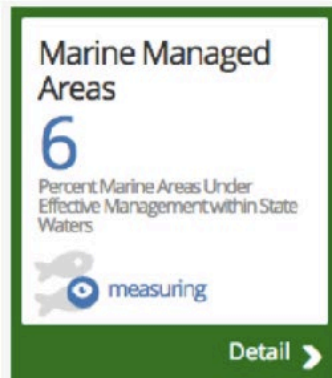


Niue Moana Mahu Marine Protected Area



Hawai'i 30x30

Manage 30% of Hawai'i's near-shore waters as marine managed areas by 2030



TARGET: Increase Marine Management in Hawai'i

HOW WE'RE TRACKING PROGRESS: The goal will be measured by the percent of Hawai'i's

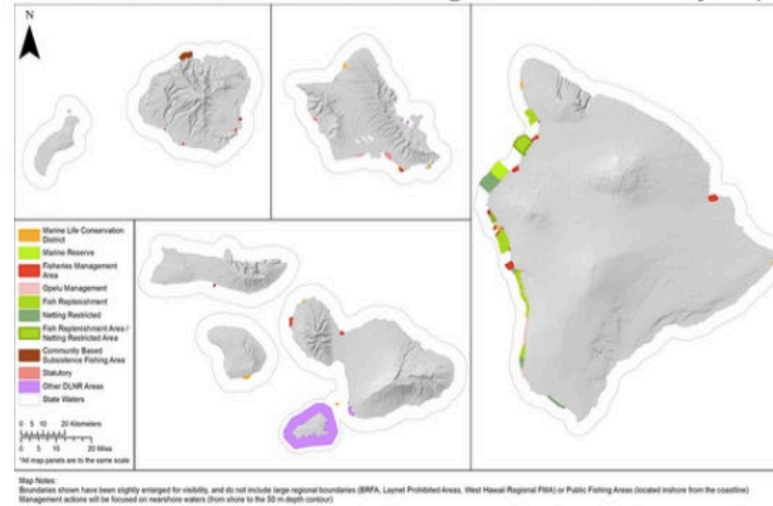


Figure 1: Aloha+ Challenge Dashboard - Map of Hawai'i Marine Designations

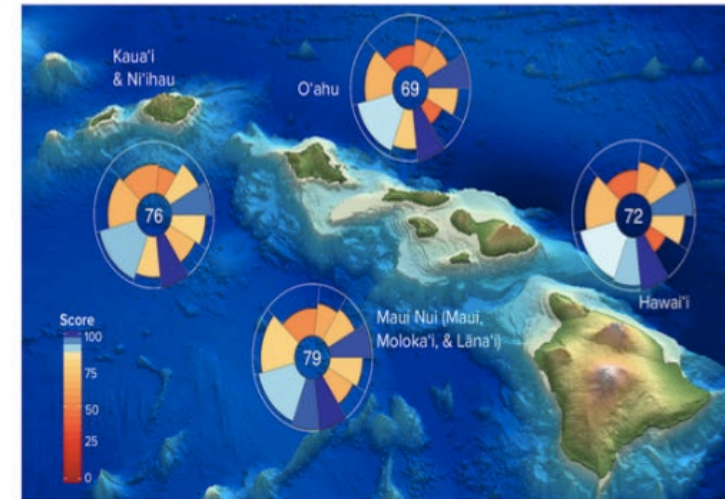


Figure 2: Aloha+ Challenge Dashboard - 2018 Hawai'i Ocean Health Index



LEWA
(sky)

WAO
(forest)

KULA
(plain)

KAHAWAI
(stream)

KAHAKAI
(shore)

MOANA
(ocean)



PAINTING COURTESY KAMEHAMEHA SCHOOLS

MALA
(gardens)

KAUHALE
(dwelling)

LO'I KALO
(taro fields)

KAUHALE
(dwelling)

LOKO I'A
(fishponds)



UN Equator Prize Winners: *Global Relevance of Hawai'i's Community-Based Subsistence Fishing Areas (CBSFAs) Model*

Two Hawai'i communities, Hui Maka'āinana o Makana of Kaua'i and Hui Mālama O Mo'omomi of Moloka'i, were awarded the [UN Development Programme 2019 Equator Prize](#) with 20 other indigenous, local and rural communities around the world for cutting-edge innovation on Community-Based Subsistence Fishing Areas. These communities are part of the Kua'āina Ulu 'Auamo network, which is a member of the Hawai'i Green Growth UN Local2030 Hub with the *Aloha+ Challenge*.



**Become part
of an inspiring
global platform.**

**Led by islands,
for all islands.**



GLOBAL
ISLAND
PARTNERSHIP



facebook.com/glispa



linkedin.com/company/glispa



twitter.com/GLISPA_discuss



glispa.org



instagram.com/glispa_



More info on Vital Sites-Journey to Marseille Events:

<https://iucngreenlist.org/vital-sites-the-journey-to-marseille/>



More info on BEST:

<https://www.life4best.org/> / <http://www.best2plus.org/>



More info on PANORAMA:

<https://panorama.solutions/en>

